

4/5/2022

Mineral County School District

Safe Return to In-Person
Instruction & Continuity of
Services 2021 - 2022



Andre' L. Ponder
SUPERINTENDENT

Mineral County School District

Belief Statement

The Mineral County Board of Trustees believes in being united in working for the best education possible for our children.

The District believes it is important to instill in our children a pride in our District and the education they receive here; and to prepare our students to compete in today's society.

Vision Statement

The vision of Mineral County School District is to become the best system where graduates can be competitive for any degree or job they pursue.

School wide Theme

“Teamwork makes the Dream Work”



Our Guiding Principles

The Mineral County School District **Safe Return to In-Person Instruction and Continuity of Services** plan is built around these principles:

- Ensuring the health and safety for students, staff, and families which include current local, state and federal guidelines and directives.
- Promoting equity in academic achievement and learning for all students.
- Focusing on the needs of our students, staff, families, and community to ensure continuity of services we provide.
- The plan will be reviewed and revised periodically as required and as necessary.
- The plan will be made available in a language that is understandable to each family, as requested.
- The district will be good stewards of local, state, and federal funds meeting the goals of the board's budget policy.



Communication Strategies

Our district will continue to utilize a variety of strategies to engage in two-way communication with stakeholders in various languages as requested, using of the following tools:

- Our district website at <https://www.nvmcsd.org>
- Infinite Campus Messenger (voice, text, and email)
- Infinite Campus Parent and Student portals
- District and Site Facebook Pages
- Mineral County Independent News
- Other educational apps such as Remind, Class Dojo, etc.
- Weekly district newsletter and updates via Infinite Campus Messenger
- Full Virtual students will be contacted by a licensed teacher or substitute teacher per NDE Guidance Memo 21-02.

*** Please note, it is highly recommended that staff and parents update Infinite Campus contact information any time it changes to ensure proper and needed contact with students and families.**



Family Engagement and Commitments

“We are in this together!” We know that it is critical to engage families and community partners in order to successfully return to our Full In-Person Learning model. We look forward to hearing from families when a need of their child(ren) is not being met and or with ideas of things that can be done to improve what we are doing. We ask that you commit as a family to supporting all expectations of school as without that support, we cannot ensure safety and our ability to maintain a Full In-Person learning plan. We look forward to being your partner throughout the year ahead!



Short Term Closure or any adjustment to the Full In-Person Learning Model

In the event that a significant outbreak is confirmed within the Mineral County School District, the following procedures will be effective immediately:

- The superintendent or her/his designee will contact the Mineral County Deputy Health Officer and County Manager and will follow the guidelines established.
- If it is determined that a short term closure is necessary due to a potential or confirmed COVID-19 exposure, the district will cancel all co-curricular and after school activities as well as any large events scheduled.
- Students will return to remote learning if needed (guidelines from 2020-2021)
- School facilities will be properly disinfected and sanitized per the CDC and local public health officials' guidance.

Full In-Person Learning begins August 23, 2021



Safety and Logistics Expectations

Health, Wellness, CDC Guidance & Nevada Emergency Directives

- No single health and safety measure in isolation will effectively mitigate the spread of COVID-19. Therefore, a multi-layered approach will be used. The district will follow any current directives or mandates regarding health and wellness for any staff member or student who is working or attending in person during this time, including, but not limited to:
 - Handwashing and Respiratory and other hygiene will be taught and practiced.
 - Appropriate physical distancing will be implemented as practicable.
 - [Health Self-Screener](#) before coming to school--remain home if any symptoms are present per the following protocols:
 - [Exposure and Isolation Protocols](#)
 - Contact Tracing may occur as needed.
 - All Mineral County School District employees are encouraged to take full advantage of various health and safety benefits offered by the district.
 - Vaccination availability information will be shared with families and staff throughout the year. There is no current requirement that students or staff receive the COVID-19

Board Approved – July 13, 2021 – “This is a live document and is subject to change.”

Revised approval date – April 5, 2022

vaccinations, but unvaccinated individuals are subject to stricter isolation requirements than those who are vaccinated and may be subject to stricter CDC and state guidelines. The best site for up-to-date information is available from the Mineral County Emergency Management's Facebook page. They consistently advertise drive-through opportunities for testing and vaccinations in the Mineral County area.

Face Covering Requirements

- In accordance with Declaration of Emergency Directive 052, the face covering mandate in Nevada was rescinded with certain exceptions.
- Students, staff and visitors must comply with the "Revised CDC COVID-19 Isolation and Quarantine Guidance" from January 3, 2022.
- If the Local Health Authority of Mineral County Health and Human Services declares a school-wide outbreak they "may require the mandatory and immediate use of face coverings for all students and staff in the affected school building".

* All students and staff may request free COVID testing and face coverings (including N95 or KN95)

Link to mask wearing guidance: [Your Guide to Masks | CDC](#)

Modifying Facilities to Allow for Physical Distancing as needed: At this time Mineral County School District recommends, wherever possible, students in the cafeteria, multipurpose rooms, auditoriums, and other large common areas practice six feet of social distancing between peers and adults. In circumstances of limited capacity where students can only practice three feet of social distancing, the following is implemented,

- Students are seated with peers who they are sitting with during the instructional day to limit additional student exposure.
 - Students are transitioned out of the cafeteria or multipurpose room as soon as possible to the alternate location to maintain social distancing.
 - Seating charts are maintained with the most up-to-date information
- An area for students with possible COVID-19 symptoms has been established at every school.

The District will use master schedules to balance class numbers as much as possible. Remove unused desks and furniture in classroom; maximize social distancing (to the extent practicable). Limit physical interaction through partner or group work. Establish distance between the teacher's desks/board and students' desks. Identify and utilize large spaces (i.e. gymnasiums, auditoriums, outside spaces – as weather permits) for social distancing.

School Environment

- School sites will be open to students, staff members, and all other individuals, including family members, volunteers, recruiters, contractors, etc. All non-school individuals are held to the same guidelines and should only plan to be present if in good health.

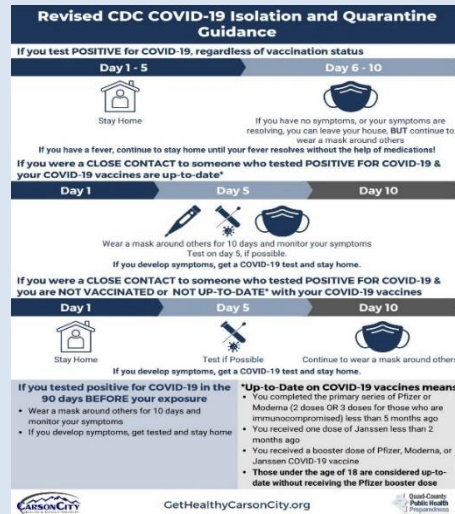
- The district will institute increased and systematic cleaning protocols to be used by school staff throughout the campuses (including restrooms) as well as classrooms. These protocols will include:
 - Regular cleaning of high-touch surfaces including desks, chairs, doorknobs, restroom facilities, and other surfaces
 - Classroom sanitization with appropriate and approved solutions will be used in classrooms. Alcohol wipes will be used to wipe down all electronics after use.
 - Air exchange in buildings will meet industry expectations.

Link to [Ventilation in Buildings | CDC](#)

Handwashing and Respiratory Etiquette

Signs or posters will be placed in highly visible locations (entrances, classrooms, restrooms) that promote protective measures. Announcements using the PA system and hallway monitors. Handwashing will be encouraged throughout the day and expected before and after meals. Hand sanitizer is provided throughout the buildings.

Staff and students are encouraged to wash or sanitize hands regularly, especially before and after check-in procedures, between classes or activities, and working with children or supplies.



Link to [Guidance for COVID-19 Prevention in K-12 Schools | CDC](#)

Diagnostic and Screening Testing

Mineral County School District has opportunities to engage in testing in schools to manage outbreaks and expedite isolations. Contact tracing in combination with isolation and quarantine will be conducted following testing in collaboration with the State, local, or Tribal Health Departments using the Nevada Division of Public and Behavioral Health guidelines in cooperation with Mineral County Emergency Management and the Community Health Officer.

Regular COVID-19 Testing Program*

- COVID-19 testing is available for symptomatic and asymptomatic individuals in Mineral County and surrounding areas for students, staff, volunteers, and community members
 - Regular COVID-19 testing occurs throughout the week as needed or requested

Board Approved – July 13, 2021 – “This is a live document and is subject to change.”

Revised approval date – April 5, 2022

- Individuals with a positive COVID-19 test result will be asked to follow the “Revised CDC Quarantine and Isolation Guidance”

*Sections 6 and 7 of Emergency Directive 048 will be followed until its expiration on February 27, 2022, upon the approval of this plan from the Local Health Authority. Identifying and Mitigating a School-Wide Outbreak of COVID-19

- An outbreak will be defined per the Council of State and Territorial Epidemiologists (CSTE)
 - “Multiple positive cases comprising at least 10% of students, teachers, or staff within a specified core group **AND** epidemiologically linked in the school setting or a school-sanctioned extracurricular activity” (CSTE, August 6, 2021)
- The outbreak will be mitigated by following the guidance from the Local Health Authority, which may include the aforementioned face covering mandate
- The outbreak will be monitored and closed under the direction of the Local Health Authority

Per Declaration of Emergency Directive 052

“Irrespective of any plan adopted by a county school district, charter school, or private school pursuant to this Section, if a local health authority determines that a school wide outbreak of COVID-19 is occurring and is not being adequately mitigated by the school district, charter school, or private school, the applicable local health authority may require the mandatory and immediate use of face coverings for all students and staff in the affected school building(s) and any additional mitigation measures deemed necessary by the local health authority for that school or school building(s). In such an event, the face covering requirement and any other mitigation measures remain in effect until the local health authority determines that the outbreak is closed.”

Social, Emotional, Mental Health and other needs of Staff and Students

Mineral County School District employs a Mental Health Counselor at Hawthorne Elementary School and Safe School Professionals at each of our school to assist in supporting students. In addition, MCSD provides an Employee Assistance Program which includes confidential support services, help managing stress, anxiety and other support programs.

Mineral County School District has examined the ratio of School Instructional Support Staff and in addition to using ARP funds we are leveraging local wellness resources from local health departments, community partners, and federal resources to provide wellness services on school campuses. Links to additional resources follows:

[Coronavirus and COVID-19 | U.S. Equal Employment Opportunity Commission \(eeoc.gov\)](https://www.eeoc.gov/)

Board Approved – July 13, 2021 – “This is a live document and is subject to change.”

Revised approval date – April 5, 2022

Nutrition Services

- All students, including those in Distance Learning, will have daily breakfast and lunch made available.
- Our district will support food options during extended closures such as scheduled school breaks.
- All students in Mineral County School District will continue to receive free meals through our current USDA eligibility.



Transportation Services

- Follow this link for recent changes to wearing mask on buses: [Requirement for Face Masks on Public Transportation Conveyances and at Transportation Hubs | CDC](#)
- Driver will disinfect handrails, seat tops and entrance doors between routes
- Daily disinfecting of buses will be performed by the Mineral County School District Transportation staff



Learning and Curriculum Expectations

Learning Model

- All basic and social-emotional needs of students and staff will be met in order to optimize student learning, including access to school counselors at school sites and support from Safe School Professionals and others.
- Enroll in **Full In-Person Learning**:
 - Students will be held accountable to all policies and regulations related to in-person learning as set forth in board policy/regulation and district and school handbooks.
 - Daily schedules for Full In-Person Learning will be posted on the district and school websites and communicated to families through Infinite Campus Messenger.
 - Students will attend school every day with all co-curricular opportunities in place beginning in August.
 - Students who become excluded due to exposure or isolation related to COVID-19 will be given temporary distance learning opportunities through their classroom teacher.
- Enroll in our **Distance Learning (MCDL)** working through building principals and counselors:
 - Mineral County School District has a process that requires all students and families interested in distance education to contact their school principal to begin the process.

- There is an application process and the student enrollment may be limited. (Window now closed).
- If approved, recognize you must have internet access and you can choose to use your own device or checkout a Chromebook from your zone school.
- Once enrolled, students in grades K-12 will be required to stay in this placement for one semester. If after two weeks of enrollment a student who demonstrates the inability to complete assignments they will be transitioned back to their zoned brick and mortar school.
- Our district will require a signed agreement that outlines the expected expectations for students in order to work in the online environment and will work with families, JPO, DCFS and Tribal Court Services as needed should a student become unsuccessful after interventions in this model.
- Online resources and learning management systems (LMS) used may include IXL, Edgenuity, Google Classroom as well as other technology-based tools and materials.
- Communication is key with this model and will be of the highest priority to ensure that all learners' needs are met.
- All grading and reporting will be competency-based.



Learning Schedules

- All learners with Individualized Education Plans (IEPs), students with 504s, and our English Language Learners will be met with specific solutions to support their learning based on their plans and team decisions. IEP teams work with the school nurse, licensed health care provider, and parent/guardian to determine if it is in the best interest of the child to return to school. Medically fragile students are considered a vulnerable COVID-19 population. Schedules at individual buildings will incorporate critical lessons learned from the 2020-2021 school year, including, but not limited to, passing periods, length of learning periods, lunch, recess, etc.

2021-2022 Schedule

- The start day of the 2021-2022 school year will be Monday, August 23, 2021, with an end date of June 2, 2022.

2021-2022 School Times

School Site	Start Time	End Time
Mineral County High School	8:05am	3:40pm
Hawthorne Jr. High School	8:00am	3:25pm
Hawthorne Elementary School (Pre-School)	8:10am	2:25pm
Hawthorne Elementary School (K-6)	8:10am	3:15pm
Schurz Elementary School Early Release (1:45pm Every Wednesday)	8:00am	2:45pm



Teaching and Learning / Curriculum

Board Approved – July 13, 2021 – “This is a live document and is subject to change.”
 Revised approval date – April 5, 2022

- Basic and Social Emotional needs of students and staff will be met in order to optimize student learning.
- All students will continue to have equitable access to high-quality curricular materials and effective instruction.
- Standards-based grade level instruction will occur with in-person instruction and distance learning models.
- Professional learning opportunities will continue to be available to our staff for continuous improvement. **Grading**
- Conventional grading scale and report cards assigned.
- Attendance operates under normal Mineral County School District procedures

Attendance

- Consideration will be given to various situations as they may occur after consultation with the teacher and principal.
- Any student who is required to be in at-home isolation based on possible COVID-19 exposure will engage with his/her teacher(s) through distance options to continue learning while away from school.
- Teachers are required (NAC 387.165 and NAC 387.171) to take attendance daily. Daily attendance must be taken in Infinite Campus, the state designated student information system for class record books.



Technology

- Internet access for families
 - For Distance Learning students, Mineral County School District will assist families that do not have internet access through the use of hotspots.
- Chromebook Distribution/Accountability/Repair
 - All students K-12 will be assigned a district-issued Chromebook for use.
 - Chromebooks will be distributed along with the Technology Tools manual and Acceptable Use Policy at a predetermined time for each family and location (may be before school begins).
 - Any damage to or loss of Chromebooks, other devices, and ancillary supplies (such as cords) will all be charged out the same across the district, and fees will be added to students' Infinite Campus accounts.
 - Options for technology support will be provided using the following email address: helpdesk@nvmcsd.org.



Co-Curricular Events and Activities and External Use of Facilities

- NIAA activities are set to fully reopen for fall 2021 activities.
- External Facility Use has returned to the existing procedures per Board Policy/Regulation 1330.1

CDC Guidance and Nevada Emergency Directives

- Mineral County School District will advise staff, students and families of the current CDC guidance and will in accordance with Nevada Emergency Directives.

Plan Review and Revisions

MCSD will allow for the continual review of input from our community, allowing the District to prepare and post on the District's website any revision to this plan no later than:

January 15, 2022

June 15, 2022

December 15, 2022

June 15, 2023

